

2024 General Primary Election YoCo Voter Guide

Tuesday, April 23 Presidential Primary Election

Make Your Vote Happen.

Information in this Voter Guide is current as of the time of printing. For the most up to date information regarding elections go to vote.pa.gov

Dear Voter,

Every year is an election year. This year voters across our country will cast their ballots in a General Election on November 5, 2024. In preparation for the November General Election, Pennsylvania will hold its General Primary Election on April 23, 2024. This year voters will nominate candidates to run for the office of the President of the United States, the highest office in our nation. These nominated candidates will then select a running-mate for the Office of Vice President and voters will have the opportunity to elect a ticket via the electoral college to serve our country. This year the results of the November election in Pennsylvania will determine the allocation of 19 of the 538 total Electoral College votes of which a majority of 270 is required to win.

For the United States Congress, Pennsylvania will elect a United States Senator and 17 Members of the U.S. House of Representatives. Here in York County, voters are split between the 10th and the 11th Congressional Districts. At the State level, Pennsylvania voters will elect a new Attorney General, and will elect an Auditor General and State Treasurer. All 203 members of the Pennsylvania House of Representatives, including the seven members representing York County, will be on the ballot. Half of Pennsylvania's State Senators, those representing odd-numbered districts, will also be elected this year. Candidates for these offices will also be nominated based on the results of the April 23, 2024, General Primary Election.

Finally, voters registered as Republicans and Democrats will elect their respective parties' delegates and alternate delegates to the Republican and Democratic National Conventions. Pennsylvania maintains a closed-primary system in which only voters registered with the particular political party affiliation can vote in that party's partisan primary election. As such, only registered Republicans can vote in the Pennsylvania Republican Primary and only registered Democrats can vote in the Pennsylvania Democratic Primary. In November, all registered voters will have the opportunity to vote to elect candidates for office.

Be informed. Make a Plan. Vote.

Sincerely,

YoCo Voter Guide Partners

YoCo Voter Guide Partners



Affordable Housing
ADVOCATES
OPENING DOORS, Improving Lives



NAACP
York Branch



**York County
Economic
Alliance**

**York County Office of
Elections and Voter
Registration**

**York County
Municipal Managers
Association**

**eliminating racism
empowering women**
ywca
York

Table of Contents

Important Dates to Remember	4
Resources	4
Voter Registration	5
Mail-in Ballots	6
Absentee Ballots	7
Voter ID Information for First-Time Voters	8
Polling Location Details	9
Poll Worker Information	9
Voting Rights for Reentrants	9
Candidates on the Ballot	11
York County District Maps	13

Important Dates to Remember

Monday, April 8 - Last day to register to vote in the 2024 Presidential Primary Election

Tuesday, April 16 - Last day to apply for a mail-in or absentee ballot for the 2024 Presidential Primary Election

Curbside Drop-Off Service - York County Administration Center 28 E. Market Street, York, PA 17401

- Saturday, April 13th and 20th from 10am to 2pm;
- Sunday, April 14th and 21st from 10am to 2pm; and,
- Election Day, April 23rd from 7am to 8pm.

Election Day: Tuesday, April 23 - Polls are open from 7:00 am to 8:00 pm. Hand delivery of mail-in or absentee ballots must be completed by 8:00 pm on this day to the York County Elections & Voter Registration Office, 2401 Pleasant Valley Road, Suite 219, York, PA 17402.

Resources

York County Elections and Voter Registration Office

Regular Business Hours: 8:00 am to 4:30 pm, Monday to Friday

Phone: 717-771-9604

Website: yorkcountypa.gov/503/Elections-Voter-Registration

Locations:

2401 Pleasant Valley Road, Suite 219, York, PA 17402 - East York Office & Mailing Address

28 E. Market Street, York, PA 17401 - Downtown York City Office

Pennsylvania Department of State Voting and Elections

Phone: 1-877-868-3772

Website: www.vote.pa.gov

Commonwealth of Pennsylvania Voting and Elections Guide

Website: <https://www.pa.gov/guides/voting-and-elections/>

Voter Registration

Monday, April 8 is the last day to register to vote in the General Election

***Please note that Pennsylvania maintains a closed primary system, in which only voters who are registered with the partisan affiliation of a particular political party can vote in said party's partisan primary. As such, only registered Republicans can vote in the Pennsylvania Republican Primary and only registered Democrats can vote in the Pennsylvania Democratic Primary. Voters wishing to cast a ballot in either major party's partisan primary should ensure that their voter registration is updated accordingly.**

To register to vote you must:

1. Fill out a voter registration application form.
2. Deliver your application to the York County Election office for review.
3. If your application is accepted, you will get a voter registration card in the mail. The voter card will show your name, address, party affiliation, and the address where you will vote.

You can fill out an application:

Option 1: Online

(<https://www.pavoterservices.pa.gov/Pages/VoterRegistrationApplication.aspx>)

Option 2: By mail. Print and fill out this voter registration application.

(https://www.vote.pa.gov/Resources/Documents/Voter_Registration_Application_English.pdf)

Applications are also available in Spanish, Simplified & Traditional Chinese, and Vietnamese

(<https://www.vote.pa.gov/Register-to-Vote/Pages/How-to-Register-to-Vote.aspx>)

Option 3: Visit the York County Elections & Voter Registration Office, 2401 Pleasant Valley Road, Suite 219, York, PA 17402 or at the Downtown York City Office, 28 E. Market Street, York, PA 17401.

If you are already registered to vote you can update party affiliation, name, or address:

Option 1: Make changes online.

(<https://www.pavoterservices.pa.gov/pages/VoterRegistrationApplication.aspx>)

Option 2: Print and mail in an updated voter registration application.

(https://www.vote.pa.gov/Resources/Documents/Voter_Registration_Application_English.pdf)

Applications are also available in Spanish, Simplified & Traditional Chinese, and Vietnamese

(<https://www.vote.pa.gov/Register-to-Vote/Pages/How-to-Register-to-Vote.aspx>)

Option 3: Visit the York County Elections & Voter Registration Office located at 2401 Pleasant Valley Road, Suite 219, York, PA 17402 or at the Downtown York City Office, 28 E. Market Street, York, PA 17401.

Check your registration status here:

<https://www.pavoterservices.pa.gov/pages/voterregistrationstatus.aspx>

Mail-in Ballots

Who is eligible?

- All registered voters in Pennsylvania are eligible to apply for a mail-in ballot and voters are not required to provide a reason for requesting a mail-in ballot.

How to apply for a Mail-in Ballot

Option 1: Registered voters can apply for a mail-in ballot online.

(<https://www.pavoterservices.pa.gov/OnlineAbsenteeApplication/#/OnlineAbsenteeBegin>)

Option 2: Registered voters can print and mail in an application to receive a mail-in ballot.

(<https://www.vote.pa.gov/Voting-in-PA/Pages/Mail-and-Absentee-Ballot.aspx>)

Applications are also available in Spanish, Simplified & Traditional Chinese, and Vietnamese

Option 3: Apply for a mail-in ballot in person at either York County Elections & Voter Registration Office location: 2401 Pleasant Valley Road, Suite 219, York, PA 17402 at 28 E. Market Street, York, PA 17401.

Important Items to Note

- The deadline to apply for a mail-in ballot is Tuesday, April 16.

How to Vote with a Mail-in Ballot

Step 1: Complete your ballot.

Step 2: Please note: there are two envelopes. Place your ballot in the identified yellow “Official Election Ballot” envelope and then into the mailing envelope. Be sure to sign the declaration on the back of the mailing envelope **and date it with the date of your signature**, or your vote may not count.

Step 3: Your ballot must be **RECEIVED** by the York County Election Office **BEFORE** Tuesday, April 23 at 8:00 pm.

You can mail your ballot to the York County Election Office located at 2401 Pleasant Valley Road, Suite 219, York, PA 17402, or hand deliver you ballot to either the Pleasant Valley Road location or the Downtown York City Office located at 28 E. Market Street, York, PA 17401. Ballots must be returned **BEFORE** Tuesday, April 23 at 8:00 pm. **Postmarks are not enough** and if your ballot is not received in time it will not be counted.

Important Items to Note

- You can check the status of your mail-in ballot here - <https://www.pavoterservices.pa.gov/Pages/BallotTracking.aspx>
- If you added your email to your mail-in ballot application, you will receive a confirmation when your ballot arrives at the election office.
- A video demonstration showing the steps to complete your mail-in ballot is available here - <https://www.youtube.com/watch?v=0RfWafqTKt4&t=7s>
- **Please note**, that only the voter can drop off his or her mail-in ballot, unless the voter has a disability, as defined by the Americans with Disabilities Act, and has completed the necessary paperwork to authorize a designated agent to obtain and/or return the mail-in ballot.
 - <https://www.vote.pa.gov/Resources/Documents/Authorize-Designated-Agent-for-Mail-in-or-Absentee-Ballot.pdf>

Absentee Ballots

Who is eligible?

Registered voters who fall under one of the following circumstances:

- College students who are not registered to vote at their school address.
- People whose work or vacation take them away from the municipality where they live on voting day.
- Those with a physical disability or illness that prevents them from going to the polling place.
- People who may have a conflict due to the celebration of a religious holiday.
- Service Members, their families, and overseas citizens **must** go through the Federal Postcard Application (FPCA) process. For full Information, go to the Federal Voting Assistance Program website at <https://www.fvap.gov/>.
- Inmates who haven't been convicted of a felony.

How to receive an Absentee Ballot

Option 1: Registered voters can apply for an absentee ballot online -

(<https://www.pavoterservices.pa.gov/OnlineAbsenteeApplication/#/OnlineAbsenteeBegin>)

Option 2: Registered voters can print and mail in an application to receive an absentee ballot.

(<https://www.vote.pa.gov/Voting-in-PA/Pages/Mail-and-Absentee-Ballot.aspx>)

Applications are also available in Spanish, Chinese, and Vietnamese

Option 3: Apply for an absentee ballot in person at 2401 Pleasant Valley Road, Suite 219, York, PA 17402 or at the Downtown York City Office located at 28 E. Market Street, York, PA 17401.

Important Item to Note

- Absentee ballot applications must be **RECEIVED** by the York County Election Office by 5:00 pm on Tuesday, April 16, the elections office will be open until 5:00 pm if a voter prefers to complete a ballot application in-person.

How to Vote with an Absentee Ballot

Step 1: Complete your ballot.

Step 2: Please note: there are two envelopes. Place your ballot in the identified "Official Election Ballot" envelope and place it in the mailing envelope. Be sure to sign the declaration on the back of the mailing envelope **and date it with the date of your signature**, or your vote may not count.

Step 3: Your ballot must be **RECEIVED** by the York County Election Office **BEFORE** Tuesday, April 23 at 8:00 pm.

You can mail your ballot to the York County Election Office located at 2401 Pleasant Valley Road, Suite 219, York, PA 17402, or hand deliver you ballot to either the Pleasant Valley Road location or the Downtown York City office located at 28 E. Market Street, York, PA 17401. Ballots must be returned **BEFORE** Tuesday, April 23 at 8:00 pm. **Postmarks are not enough** and if your ballot is not received in time it will not be counted.

Important Items to Note

- You can check the status of your absentee ballot here:
<https://www.pavoterservices.pa.gov/Pages/BallotTracking.aspx>
- If you added your email to your absentee ballot application, you will receive a confirmation when your ballot arrives at the election office.
- A video demonstration showing the steps to complete your absentee ballot is available here -
<https://www.youtube.com/watch?v=ORfWafqTKt4&t=7s>
- **Please note**, that only the voter can drop off his or her ballot, unless the voter has a disability, as defined by the Americans with Disabilities Act, and has completed the necessary paperwork to authorize a designated agent to obtain and/or return the absentee ballot.
 - <https://www.vote.pa.gov/Resources/Documents/Authorize-Designated-Agent-for-Mail-in-or-Absentee-Ballot.pdf>

Voter ID Information for First-Time Voters

Who is required to show proof of identification before Voting?

Voters who are voting in a polling place for the first time are required to show an approved form of identification before they are permitted to vote in a polling place. This applies to voters who are newly registered to vote and those who have moved to another polling place.

Approved forms of Photo Identification are:

- Pennsylvania driver's license or PennDOT ID card
- ID issued by any Commonwealth agency
- ID issued by the U.S. Government
- U.S. passport
- U.S. Armed Forces ID
- Student ID
- Employee ID
- Firearm permit

If you do not have a photo ID, a non-photo ID that contains your name and address can be used:

- Confirmation issued by the County Voter Registration Office
- Non-photo ID issued by the Commonwealth
- Non-photo ID issued by the U.S. Government
- Current utility bill
- Current bank statement
- Current paycheck
- Government check

Polling Location Details

Find your polling place here:

<https://yorkcountypa.gov/969/Vote-in-Person> or

<https://www.pavoterservices.pa.gov/Pages/PollingPlaceInfo.aspx>

Poll Worker Information

How to Become a Poll Worker

If you are interested in becoming a poll worker, fill out the poll worker interest form, available here:

<https://airtable.com/shrI2NxDbcUiU2d0h> or call 717-771-9604

After you submit the form, the York County Elections & Voter Registration Office or precinct Judge of Elections will contact you. You can also reach out to the election office to follow up. More information can be found here: <https://yorkcountypa.gov/972/Become-a-Poll-Worker>.

Requirements

- You must be registered to vote in York County
 - Exceptions exist for 17-year-old high school students, who must meet additional requirements. High school students should contact the county election office for more information.
- Government officials and government employees including federal, state, county, municipal, and city are not allowed to serve as poll workers.
 - Exceptions exist for district judges, notaries public, and members of the Pennsylvania National Guard.
 - Likewise, you are generally not allowed to serve if your name appears on the ballot.
- Poll workers can work full or half days. Poll workers working full days can expect to be at their polling station by 6:00 am until after the polls close at 8:00 pm.
- Poll workers are required to attend a county-led training prior to their election day duties.
- All poll workers are paid for their time.

Voting Rights for Reentrants

Source: <https://www.vote.pa.gov/Register-to-Vote/Pages/Convicted-Felon,-Misdemeanant-or-Pretrial-Detainee.aspx>

Who can register to vote?

You may register and vote if you hold citizenship in the United States for at least one month. before the next election, are a Pennsylvania resident and resided in your election district for at

Information in this Voter Guide is current as of the time of printing. For the most up to date information regarding elections go to [vote.pa.gov](https://www.vote.pa.gov)

least 30 days before the next election; and will be at least 18 years of age on the day of the next election.

If you meet the above qualifications, you can register and vote if you:

- Are a pretrial detainee confined in a penal institution awaiting trial on charges of a felony or a misdemeanor.
- Are convicted of a misdemeanor and are confined in a penal institution.
- Were released (or will be released by the date of the next election) from a correctional facility or community confinement facility upon completion of your term of incarceration for conviction of a misdemeanor or a felony.
- Are on probation or released on parole.
- Are a parolee living in a community confinement center (except for state intermediate punishment (SIP) inmates)
- Are under house arrest (home confinement), regardless of conviction status or the status of the conditions of confinement.

You are not eligible to register and vote if you:

- Are currently confined in a penal institution for conviction of a felony (even if you are also incarcerated for one or more misdemeanor offenses) and will not be released from confinement before the next election.
- Are in a community confinement facility or other alternative correctional facility for conviction of a felony and will not be released before the date of the next election.
- Were convicted of violating any provision of the Pennsylvania Election Code within the last four years.

How can you register to vote?

If you are qualified to register to vote you may apply to register using the instructions provided in the previous sections of this guide.

Please note: If you are in a penal institution, your residence for voter registration is:

- The last place you registered to vote before confinement in a penal institution; or
- Your last known physical address before confinement (You may not use a P.O. Box); or
- A new residence established while confined (for example, if your spouse establishes a new residence where you intend to reside upon your release from confinement).
- A penal institution or community confinement facility cannot be your residence address for registering to vote; however, you may use those locations for your mailing address.

How do you vote after registering?

- If you are confined to a penal institution, apply for an absentee ballot. Further instruction is explained in the above sections.
- If you are **not** confined in a penal institution, community confinement facility, or under house arrest, you may vote in person at your assigned polling place. That location is on your voter identification card or can be found using the directions in an earlier section of this guide.

Candidates on the Ballot

Federal Office Candidates as of Feb. 14, 2024 (Listed Alphabetically by Last Name):

- President of the United States (4-year term)
 - Republican Primary
 - Nikki Haley
 - Donald J. Trump
 - Democratic Primary
 - Joseph R. Biden, Jr. (Incumbent)
 - Dean Phillips
- United States Senator (6-year term)
 - Republican Primary
 - Dave McCormick
 - Democratic Primary
 - Bob Casey, Jr. (Incumbent)
- U.S. Representative for the 10th Congressional District (2-year term)
 - Republican Primary
 - Rep. Scott Perry (Incumbent)
 - Democratic Primary
 - John Broadhurst
 - Richard "Rick" Coplen
 - Shamine Daniels
 - Blake Lynch
 - Mike O'Brien
 - Janelle Stelson
- U.S. Representative of the 11th Congressional District (2-year term)
 - Republican Primary
 - Lloyd Smucker (Incumbent)
 - Democratic Primary
 - James Atkinson

State Office Candidates as of Feb. 14, 2024 (Listed Alphabetically by Last Name):

- Attorney General of Pennsylvania (4-year term)
 - Republican Primary
 - Dave Sunday
 - Wendell Williams
 - Democratic Primary
 - Keir Bradford-Grey
 - Eugene DePasquale
 - Joe Khan
 - Jared Solomon
 - Jack Stollsteimer
- Auditor General of Pennsylvania (4-year term)
 - Republican Primary
 - Tim DeFoor (Incumbent)
 - Democratic Primary
 - Malcolm Kenyatta
 - Mark Pinsley
- State Treasurer of Pennsylvania (4-year term)

- Republican Primary
 - Stacey Garrity (Incumbent)
- Democratic Primary
 - Ryan Bizzaro
 - Erin McClelland
- Pennsylvania State Senator for the 31st District (4-year term)
 - Republican Primary
 - Dawn Keefer
 - Democratic Primary
 - Mark Temons
- Pennsylvania State Representative for the 47th District (2-year term)
 - Republican Primary
 - Joe D'Orsie (Incumbent)
- Pennsylvania State Representative for the 92nd District (2-year term)
 - Republican Primary
 - Marc Anderson
 - Matthew Davis
 - Holly Kelley
 - Democratic Primary
 - Daniel Almoney
- Pennsylvania State Representative for the 93rd District (2-year term)
 - Republican Primary
 - Mike Jones (Incumbent)
- Pennsylvania State Representative for the 94th District (2-year term)
 - Republican Primary
 - Wendy Fink (Incumbent)
- Pennsylvania State Representative for the 95th District (2-year term)
 - Republican Primary
 - Jasmine Rivera
 - Democratic Primary
 - Carol Hill-Evans (Incumbent)
- Pennsylvania State Representative for the 169th District (2-year term)
 - Republican Primary
 - Kate Klunk (Incumbent)
- Pennsylvania State Representative for the 196th District (2-year term)
 - Republican Primary
 - Seth Grove (Incumbent)

- Zachary Kile
- William Martin Wyatt

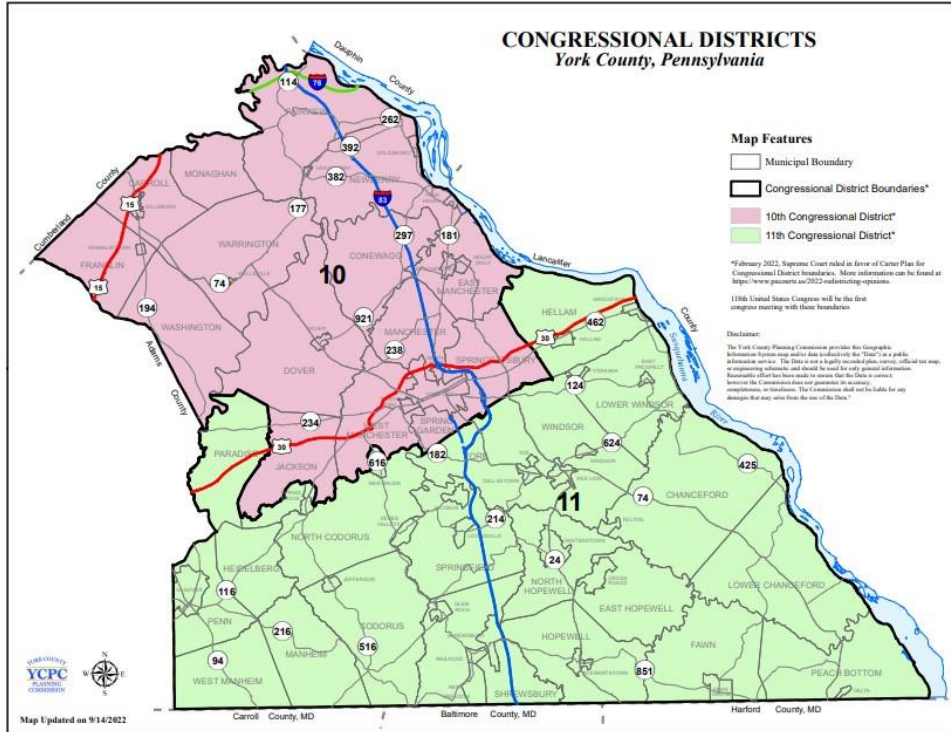
Major Party National Conventions:

- Delegate to the Republican National Convention
- Alternate Delegate to the Republican National Convention
- Delegate to the Democratic National Convention

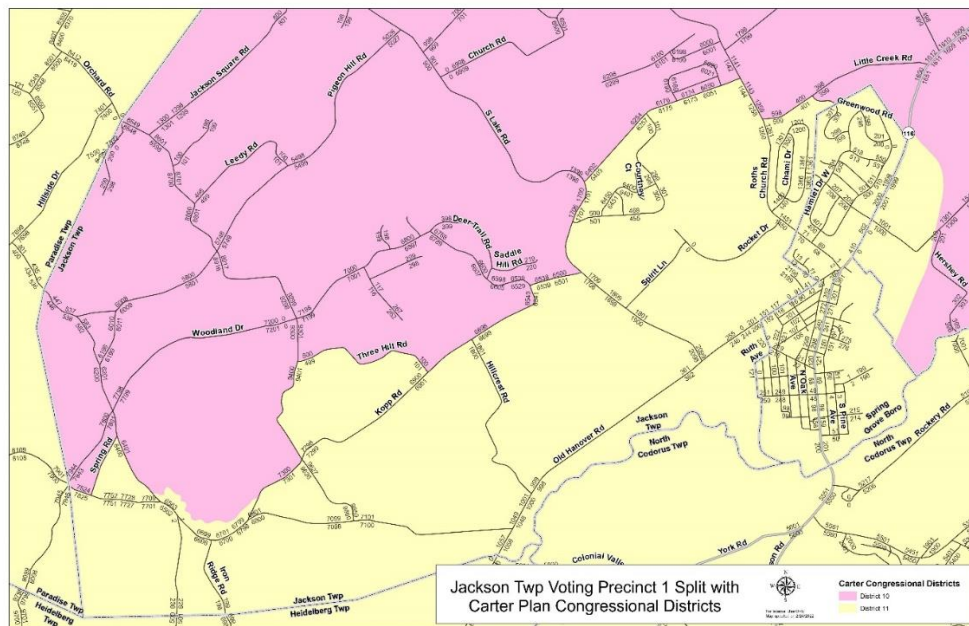
York County District Maps

*The maps below provide a rough outline to determine a voter's districts. Voters can precisely determine their districts at <https://www.legis.state.pa.us/cfdocs/legis/home/findyourlegislator/>.

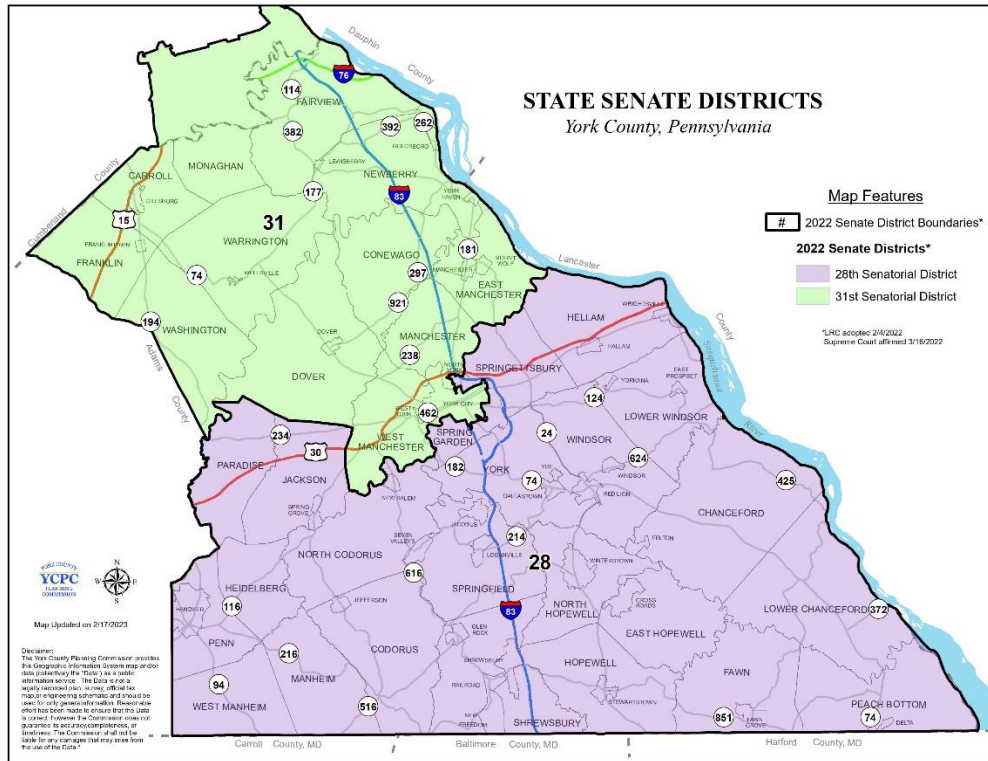
Pennsylvania Congressional Districts:



Jackson Township 1st Precinct Split:



State Senate Districts, York County:



State House Districts, York County:

